



Consolidated Test Report

SAMPLE INFORMATION:

Sample Description : **Solar DC System**
Trademark : **N/A**
Model Number : **SG1210W**
SG0603W, SG0604W, SG0605W, SG1206W, SG1215W,
SG1220W, SG1230W, SG1240W, SG1250W, SG1260W.
Shenzhen Must Power Limited
Manufacturer Address : 4-5F,Building A11, YuSheng Industrial Park, No. 467, National Highway 107,
National Highway 107, Xixiang, Bao An District, Shenzhen, China.

CLIENT INFORMATION:

Applicant : **Shenzhen Must Power Limited**
Applicant Address : 4-5F,Building A11, YuSheng Industrial Park, No. 467, National Highway 107,
National Highway 107, Xixiang, Bao An District, Shenzhen, China.
Test Standard : **IEC62321-1: 2013**
Comment : **The data shown in this consolidated test report did not exceed the limits of**
RoHS Directive 2011/65/EU, and its amendment directives.
Issue Date : **Aug. 26, 2014**

REMARKS:

1. The test data obtained and the report issued by laboratories other than BCTC are provided by the applicant to us for data consolidation purposes. The report shall not be reproduced in part without written approval of us.
2. Characterization & Condition of sample: Normal.

Approved by: _____

Casey WangDate: Aug. 26, 2014



Consolidated Test Report

No.	Component	Test Lab	Report No.& Issue Date	Test Data(ppm)
1	BLACK PLASTIC	CTI	RHS05G006396003C 2014-03-07	Cd: N.D. Pb: N.D. Hg: N.D. Cr ⁶⁺ :N.D. PBBS: N.D. PBDES: N.D.
2	SLIVERY METAL	SGS	SHAEC1403165812 2014-04-03	Cd: N.D. Pb: N.D. Hg: N.D. Cr ⁶⁺ : N.D. PBBS: N.D. PBDES: N.D..
3	SCREW	SGS	CANEC1302608805 2013-03-08	Cd: N.D. Pb: N.D. Hg: N.D. Cr ⁶⁺ : N.D.
4	PCB	SGS	CANEC1318164205 2013-11-27	Cd: N.D. Pb: N.D. Hg: N.D. Cr ⁶⁺ : N.D. PBBS: N.D. PBDES: N.D.
5	IC	SGS	SHAEC1402687703 2014-03-06	Cd: N.D. Pb: N.D. Hg: N.D. Cr ⁶⁺ : N.D. PBBS: N.D. PBDES: N.D.



Consolidated Test Report

No.	Component	Test Lab	Report No.& Issue Date	Test Data(ppm)
6	TIN	SGS	CANEC1318489302 2013-11-30	Cd: N.D. Pb: N.D. Hg: N.D. Cr ⁶⁺ : N.D.
7	BLUE PLASTIC	SGS	CANEC1316035801 2013-10-24	Cd: N.D. Pb: N.D. Hg: N.D. Cr ⁶⁺ : N.D. PBBS: N.D. PBDES: N.D.
8	RED PLASTIC	SGS	CANEC1406660813 2014-05-13	Cd: N.D. Pb: N.D. Hg: N.D. Cr ⁶⁺ : N.D. PBBS: N.D. PBDES: N.D.
9	GLUE	CTI	RHS05F016784002R2 2013-10-15	Cd: N.D. Pb: N.D. Hg: N.D. Cr ⁶⁺ : N.D. PBBS: N.D. PBDES: N.D.
10	SMD CAPACITOR	SGS	KA/2014/10558 2014-01-21	Cd: N.D. Pb: N.D. Hg: N.D. Cr ⁶⁺ :N.D. PBBS: N.D. PBDES: N.D.



Consolidated Test Report

No.	Component	Test Lab	Report No.& Issue Date	Test Data(ppm)
11	SMD RESISTOR	SGS	SHAEC1324969633 2014-01-03	Cd: N.D. Pb: N.D. Hg: N.D. Cr ⁶⁺ :N.D. PBBS: N.D. PBDES: N.D.
12	SMD DIODE	SGS	SHAEC1321669505 2013-11-11	Cd: N.D. Pb: N.D. Hg: N.D. Cr ⁶⁺ : N.D. PBBS: N.D. PBDES: N.D.
13	SMD TRANSISTOR	SGS	CKGEC1400013701 2014-01-22	Cd: N.D. Pb: N.D. Hg: N.D. Cr ⁶⁺ : N.D. PBBS: N.D. PBDES: N.D.
14	ALUMINUM ELECTROLYTIC CAPACITOR	SGS	CANEC1302481101 2013-03-07	Cd: N.D. Pb: N.D. Hg: N.D. Cr ⁶⁺ : N.D. PBBS: N.D. PBDES: N.D.
15	WHITE WIRE	SGS	CANEC1306956803 2013-05-20	Cd: N.D. Pb: N.D. Hg: N.D. Cr ⁶⁺ : N.D. PBBS: N.D. PBDES: N.D.



Consolidated Test Report

No.	Component	Test Lab	Report No.& Issue Date	Test Data(ppm)
16	RED WIRE	SGS	CANEC1306721301 2013-05-20	Cd: N.D. Pb: N.D. Hg: N.D. Cr ⁶⁺ : N.D. PBBS: N.D. PBDES: N.D.
17	BLACK WIRE	SGS	CANEC1306956801 2013-05-20	Cd: N.D. Pb: N.D. Hg: N.D. Cr ⁶⁺ : N.D. PBBS: N.D. PBDES: N.D.
18	CRYSTAL	SGS	CANEC1318423403 2013-12-03	Cd: N.D. Pb: N.D. Hg: N.D. Cr ⁶⁺ : N.D. PBBS: N.D. PBDES: N.D.
19	DC JACK	CTI	LNBF000128970004 2013-03-18	Cd: N.D. Pb: N.D. Hg: N.D. Cr ⁶⁺ : N.D. PBBS: N.D. PBDES: N.D.
20	LED	SGS	CANEC1309733701 2013-07-01	Cd: N.D. Pb: N.D. Hg: N.D. Cr ⁶⁺ : N.D. PBBS: N.D. PBDES: N.D.



Consolidated Test Report

No.	Component	Test Lab	Report No.& Issue Date	Test Data(ppm)
21	WHITE PLASTIC	SGS	KE/2014/31159 2014-03-17	Cd: N.D. Pb: N.D. Hg: N.D. Cr ⁶⁺ : N.D. PBBS: N.D. PBDES: N.D.
22	CAP	SGS	SHAEC1222952005 2012-12-31	Cd: N.D. Pb: 6 Hg: N.D. Cr ⁶⁺ :N.D. PBBS: N.D. PBDES: N.D
23	YELLOW TAPE	SGS	CANEC1210047102 2012-07-31	Cd: N.D. Pb: N.D. Hg: N.D. Cr ⁶⁺ : N.D. PBBS: N.D. PBDES: N.D.

NOTE:

- (1) Pb Limit=1000mg/kg, Cd Limit=100mg/kg, Hg Limit=1000mg/kg;
Cr⁶⁺ Limit=1000mg/kg ; PBBs Limit=1000mg/kg, PBDEs Limit=1000mg/kg
- (2) N.D. = not detected (<MDL)
- (3) MDL=Method Detection Limit
- (4) ppm = mg/kg
- (5) Conclusion:

The results shown on the report do not exceed the limit of the council of 8 June 2011 on the restriction of the use of certain hazards substances in electrical and electronic equipment under directive 2011/65/EU of the European parliament.



Consolidated Test Report

PHOTOGRAPHS OF SAMPLE AS RECEIVED

EUT Photo 1



EUT Photo 2



Consolidated Test Report

EUT Photo 3



EUT Photo 4

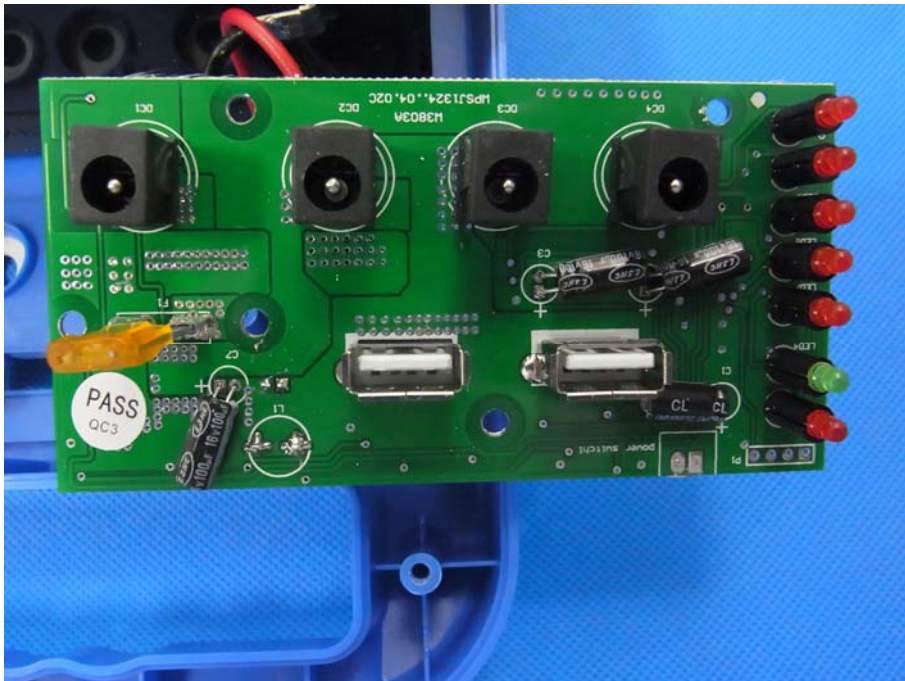


Consolidated Test Report

EUT Photo 5



EUT Photo 6



***** END OF REPORT *****